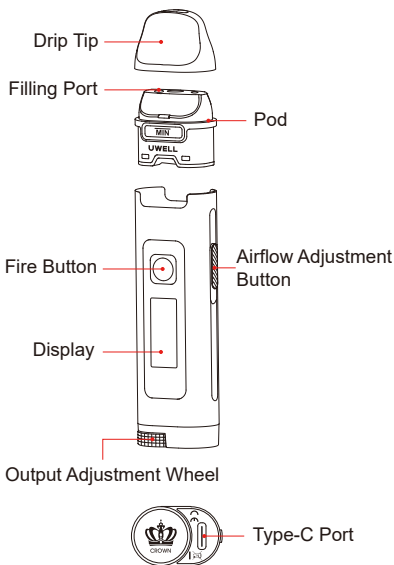
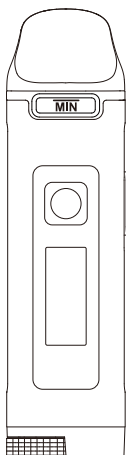


## Illustration



## Quick Guide

1. Insert the pod into the device, remove the drip tip and fill e-liquid. Please let the pod sit for 10 minutes after the first e-liquid filling.
2. Press the fire button 5 times within 2 seconds to turn it on.



Stepless Adjustment



Top Filling



Side Airflow Adjustment



Multiple Output Modes

## Specifications

- Materials: PCTG, Aluminium Alloy
- Dimensions: 106 mm x 28 mm x 18.5 mm
- Net Weight: 59 g
- E-Liquid Capacity: 2.5 ml
- Output Range: 5 W - 35 W
- Pod Specifications:
  - FeCrAl Meshed-H 0.3  $\Omega$  CROWN D Pod: 25 W - 35 W
  - FeCrAl Meshed-H 0.8  $\Omega$  CROWN D Pod: 15 W - 18 W
- Battery Capacity: 1100 mAh

## The Packaging Includes

- 1  $\times$  Crown D Device
- 1  $\times$  0.3  $\Omega$  CROWN D Refillable Pod (Pre-installed)
- 1  $\times$  0.8  $\Omega$  CROWN D Refillable Pod (Spare)
- 1  $\times$  Type-C Charging Cable
- 1  $\times$  User Manual

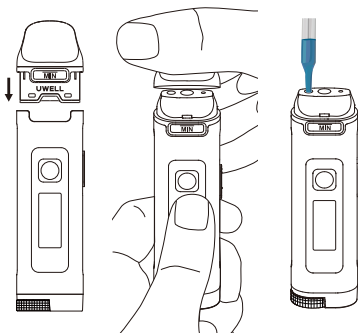
## Features

1. Built-in 1100 mAh battery with fast charging.
2. Refillable pod, cost-effective.
3. 0.96-inch TFT screen.
4. Rotate the bottom wheel to adjust output, slide the side button to adjust airflow.
5. Upgraded UWELL Pro-FOCS technology restores the flavor excellently.
6. Stable, safe, and reliable performance is ensured by a built-in safety mechanism.
7. Simple and fashionable appearance, ergonomic design for a comfortable grip.
8. Puff counters.
9. Multiple output modes - curves output mode, power output mode, customize output mode, voltage output mode and bypass output mode.

# Instructions

## 1. Pod filling

- Insert the pod into the device.
- Remove the drip tip to reveal the filling port as the picture shows.
- Fill with e-liquid.
- Put the drip tip cap on.

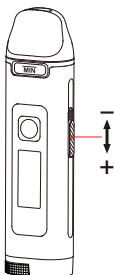


### Attention:

- Please insert the e-liquid bottle nozzle into the red filling port before filling the e-liquid.
- Do not leave the pod without the cap on. Put the drip tip cap on securely right after filling to prevent e-liquid leak.
- After the first e-liquid filling, please let it sit for 10 minutes to avoid coil burning.
- Please refill e-liquid when the e-liquid reaches the "MIN" level.

## 2. Airflow adjustment

Slide the side airflow adjustment button to adjust airflow.



## Device Instructions

### 1. Turn on/off

Press the fire button 5 times within 2 seconds to turn on/off the device.



Hello  
UWELL

Turn on interface



Goodbye!

Turn off interface

### 2. Vaping time

Fire by button or direct draw (except the customize mode). Do not vape over 8 seconds.



### 3. Folder settings

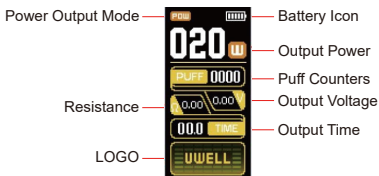
Press the fire button 3 times within 2 seconds, enter into the folder interface.

Rotate the bottom adjustment wheel to switch options, press the fire button to

enter into the sub-folder. The interface will return to the main folder when no operation is detected for 5 seconds.

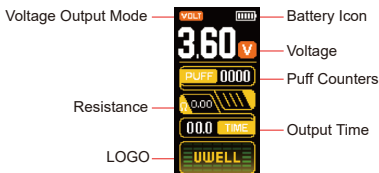


## 4. POW - power output mode



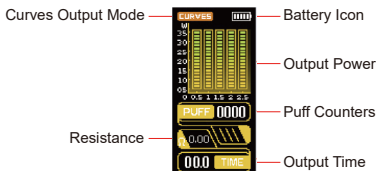
In POW mode, to change the output power, press the fire button 2 times within 2 seconds. Face the display, rotate the bottom adjustment wheel to the left to reduce the power, and rotate the wheel to the right to increase the power. Hold the fire button to confirm the power value. The power value will be automatically confirmed and stop flashing if no operation is detected for 5 seconds. The recommended output range of the 0.3  $\Omega$  coil is 5 W - 35 W, and the 0.8  $\Omega$  coil is 5 W - 18 W.

## 5. VOLT - voltage output mode



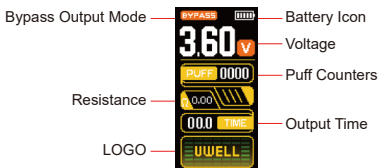
In VOLT mode, to change the output voltage, press the fire button 2 times within 2 seconds. Face the display, rotate the bottom adjustment wheel to the left to reduce the voltage, and rotate the wheel to the right to increase the voltage. The voltage adjustment range is 2.4 V - 4.0 V. Hold the fire button to confirm the voltage value. The voltage value will be automatically confirmed and stop flashing if no operation is detected for 5 seconds.

## 6. CURVES - curves output mode

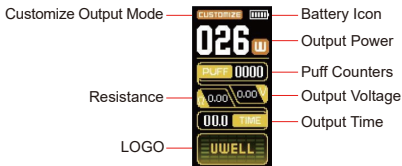


In CURVES mode, to change the output power, press the fire button 2 times within 2 seconds. Face the display, rotate the bottom adjustment wheel to the left to reduce the power, and rotate the wheel to the right to increase the power. The power adjustment range is 5 W - 35 W. Click the fire button to the next time zone to adjust power. Hold the fire button to confirm the power value. The power value will be automatically confirmed and stop flashing if no operation is detected for 5 seconds.

## 7. BYPASS - bypass output mode

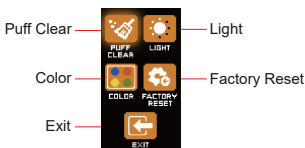


## 8. CUSTOMIZE - customize output mode



The transmitter output is not allowed in CUSTOMIZE mode. The power adjustment range is 5 W - 35 W. To change the output power, press the fire button 2 times within 2 seconds. Face the display, rotate the bottom adjustment wheel to the left to reduce the power, and rotate the wheel to the right to increase the power. Hold the fire button to confirm the power value. The power value will be automatically confirmed and stop flashing if no operation is detected for 5 seconds.

## 9. SETTINGS



The following items can be set:

- 1) Puff clear;
- 2) Display color;
- 3) Exit setting folder;
- 4) Display light brightness;
- 5) Restore factory settings

## 10. Low power protection

Please charge the battery when you see the "Low Battery" warning.



## 11. Short circuit protection

"Atomizer short" indicates a short circuit occurs, and the device stops output.



## 12. Open circuit protection

"No Atomizer" indicates an open circuit occurs, and the device stops output.





### 13. Charging

During charging, the display shows an animated icon.



Charging



Complete

### 14. Restore factory settings

Default power output mode.



### Attention

1. Please charge with certified high-quality adaptor from a reputable company and a Type-C cable with the charging current of 5V/2A.
2. The device and adaptor may warm up when charging, keep away from flammable and explosive goods.
3. Please use a dry and soft cloth to clean the device.  
Keep away from water or any liquids.
4. Please remove the pod cartridge and store it separately when you are on a plane to avoid leakage due to pressure changes.
5. Please do not put the device in your pocket with other hard objects to avoid damages.
6. Please turn off the device when it is not in use.
7. Please charge the device at least once a month.
8. Don't disassemble the device.
9. Avoid high temperature, low temperature and humidity during use or storage to avoid damage to the equipment.
10. The product parameters or pictures in this manual are for illustration purpose only, please refer to the actual product.

## **Safety Instruction**

Please read the following safety instructions carefully before using the product.

1. This product is only available to people who have reached the legal age of smoking. It is strictly forbidden for young children, pregnant women and women during breastfeeding or for patients with heart disease, high blood pressure, diabetes, depression and asthma.
2. Please put the product out of reach of children and pets to avoid injury.
3. When using this product, please keep away from inflammable and explosive materials to avoid injury.
4. The company does not assume any responsibility for any equipment damage or personal injury caused by user misuse.

## **Warranty Details**

Please keep the anti-counterfeit code and proof of purchase after purchasing the product. The warranty period is 180 days from the date of purchase. Our company provides warranty service (Device and atomizer only, exclude coil head and pod cartridge).

Please note that any of the following conditions are not covered by the warranty:

1. Exceeding the warranty period.
2. Damage caused by the use, maintenance, and storage that is not in accordance with the requirements as instructed.
3. Damage caused by unauthorized repair.
4. Damage caused by the usage of non-UWELL components.
5. Damage caused by force majeure.

## **Verification**

1. Visit the UWELL official website [www.myuwell.com](http://www.myuwell.com) through a smartphone or PC.
2. Please enter the 16 digits authentic code, and the result will be displayed in a few seconds.
3. Please feel free to contact UWELL via e-mail, phone or website for more help.

## **Customer Service**

We pride ourselves in manufacturing quality products and providing excellent customer service. For any issues, please contact us at [service@myuwell.com](mailto:service@myuwell.com).

\* UWELL reserves the right of final interpretation of the user manual.

\* It is hereby stated that the markable area on the product is not enough to mark the CE and WEEE as the standard dimensions.

# UWELL



Manufactured by SHENZHEN UWELL TECHNOLOGY CO., LTD. [www.myuwell.com](http://www.myuwell.com)

©2022 By SHENZHEN UWELL TECHNOLOGY CO., LTD., All Rights Reserved.  
Designed by UWELL Made in China



CROWN D Pod Mod  
User Manual