

UWELL

Manufactured by SHENZHEN UWELL TECHNOLOGY CO., LTD.

©2022 By SHENZHEN UWELL TECHNOLOGY CO., LTD., All Rights Reserved.
Designed by UWELL Made in China

www.myuwell.com



Uwelltech



Uwelltech



Uwelltech



Uwelltech

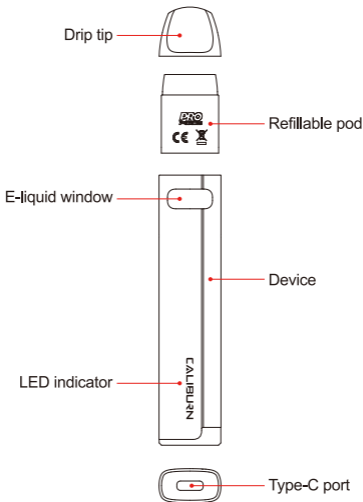


Uwell

CALIBURN

CALIBURN A2S Pod System
User Manual

Illustration



Quick Guide

1. Insert the pod into the device and remove the drip tip.
2. Fill the e-liquid through the filling port and put the drip tip back.
Let the pod sit for 10 minutes.
3. Directly draw to vape.



Light Matrix



Refillable Pod



Pro-FOCS Flavor
Adjustment Technology



Meshed-H Coil



Large E-liquid Window



Type-C port

Specifications

- Materials: Aluminium Alloy, PA
- Dimensions: 110.1 mm × 21.3 mm × 11.7 mm
- Net Weight: 31 g
- E-liquid Capacity: 1.8 ml
- Output Power: Maximum 15 W
- Pod Specification:
FeCrAl Meshed-H 1.2Ω CALIBURN A2S Refillable Pod
- Battery Capacity: 520 mAh

The Packaging Includes

- 1 × CALIBURN A2S Device
- 1 × Meshed-H 1.2Ω CALIBURN A2S Refillable Pod
(Pre-installed)
- 1 × Meshed-H 1.2Ω CALIBURN A2S Refillable Pod (Spare)
- 1 × User Manual

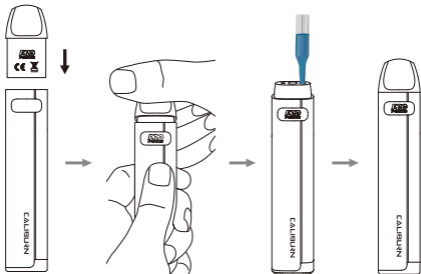
Features

1. Draw to vape, it's easy to operate.
2. Refillable pods are cost-effective.
3. Upgraded UWELL Pro-FOCS technology restores the flavor excellently.
4. Stable, safe, and reliable performance is ensured by a built-in safety mechanism.
5. A continuation of CALIBURN A series' recognizable style.
6. Smooth surface decorated with cut lines, making the device distinctive.
7. Animated light matrix flashes during vaping.
8. The device is compatible for the CALIBURN A2 Refillable Pod.

Instructions

1. How to fill the pod

- Insert the pod into the device.
- Remove the drip tip.
- Fill with e-liquid.
- Put the drip tip back.



Attention:

- Insert the nozzle of the e-liquid bottle into the filling port. Do not insert the nozzle into the middle airway.
- Fill with e-liquid after pushing the nozzle of the e-liquid bottle all the way in.
- Do not leave the filling port open for too long. Please put the drip tip back in time to prevent e-liquid leakage.
- Please let it sit for 10 minutes after the first e-liquid filling to avoid coil burning.
- Please refill the e-liquid when the e-liquid reaches the MIN level.

2. Vaping

When power is on, vape by drawing and the LED lights flash like a wave while vaping. When stop vaping, the LED lights are fading out from the bottom to the top. The green light flashes 5 times to indicate an over 8-second vaping, and the device will stop output.

3. Pod replacement

- a. Take out the used pod from the device, and install a new pod.
- b. Please let it sit for 10 minutes after the first e-liquid filling to avoid coil burning.

4. Battery level indication

During vaping, a green light indicates the battery level is over 60%, a blue light indicates the battery level is 30%-60%, and a red light indicates the battery level is under 30%. A red light flashes 10 times to indicate the battery level is too low and the device will stop output.

5. Short-circuit protection

When a short-circuit occurs, the LED indicator will flash 3 times in red, and the device will stop output.

6. Low voltage protection

When the device is at low power, the LED indicator will flash 10 times in red, and the device will stop output.

7. Overtime protection

The light will flash 5 times in green to indicate an over 8-second vape, and the device will stop output.

8. Open circuit prompt

When the pod is disconnected from the device, the blue light will flash 3 times.

9. Charging

The LED lights come on in turn when connecting the Type-C cable. The red light flashes to indicate a low battery level, the blue light flashes to indicate a medium battery level, and the green light flashes to indicate an almost full battery level. The green light will stay on when the charging is done.

Attention

1. Please charge with certified high-quality adaptor from a reputable company and a Type-C cable with the charging current of 5V/1A.
2. The device and adaptor may warm up when charging, keep away from flammable and explosive goods.
3. Please use a dry and soft cloth to clean the device. Keep away from water or any liquids.
4. Please remove the pod cartridge and store it separately when you are on a plane to avoid leakage due to pressure changes.
5. Please do not put the device in your pocket with other hard objects to avoid damages.
6. Please charge the device at least once a month.
7. Don't disassemble the device.
8. Avoid high temperature, low temperature and humidity during use or storage to avoid damage to the equipment.
9. The product parameters or pictures in this manual are for illustration purpose only, please refer to the actual product.

Safety Instruction

Please read the following safety instructions carefully before using the product.

1. This product is only available to people who have reached the legal age of smoking. It is strictly forbidden for young children, pregnant women and women during breastfeeding or for patients with heart disease, high blood pressure, diabetes, depression and asthma.
2. Please put the product out of reach of children and pets to avoid injury.
3. When using this product, please keep away from inflammable and explosive materials to avoid injury.
4. The company does not assume any responsibility for any equipment damage or personal injury caused by user misuse.

Warranty Details

Please keep the anti-counterfeit code and proof of purchase after purchasing the product. The warranty period is 180 days from the date of purchase. Our company provides warranty service (Device and atomizer only, exclude coil head and pod cartridge).

Please note that any of the following conditions are not covered by the warranty:

1. Exceeding the warranty period.
2. Damage caused by the use, maintenance, and storage that is not in accordance with the requirements as instructed.
3. Damage caused by unauthorized repair.
4. Damage caused by the usage of non-UWELL components.
5. Damage caused by force majeure.

Verification

1. Visit the UWELL official website www.myuwell.com through a smartphone or PC.
2. Please enter the 16 digits authentic code, and the result will be displayed in a few seconds.
3. Please feel free to contact UWELL via e-mail, phone or website for more help.

Customer Service

We pride ourselves on manufacturing quality products and providing excellent customer service. For any issues, please contact us at service@myuwell.com.

* UWELL reserves the right of final interpretation in the user manual.

* It is hereby stated that the markable area on the product is not enough to mark the CE and WEEE as the standard dimensions.